

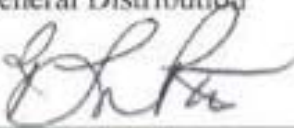


AMERICAN SAMOA
COMMUNITY COLLEGE
PRESIDENT'S OFFICE

March 4, 2015

AMERICAN SAMOA COMMUNITY COLLEGE MEMORANDUM #013-15

TO: General Distribution

FROM: 

Dr. Rosevonne Pato
Acting President

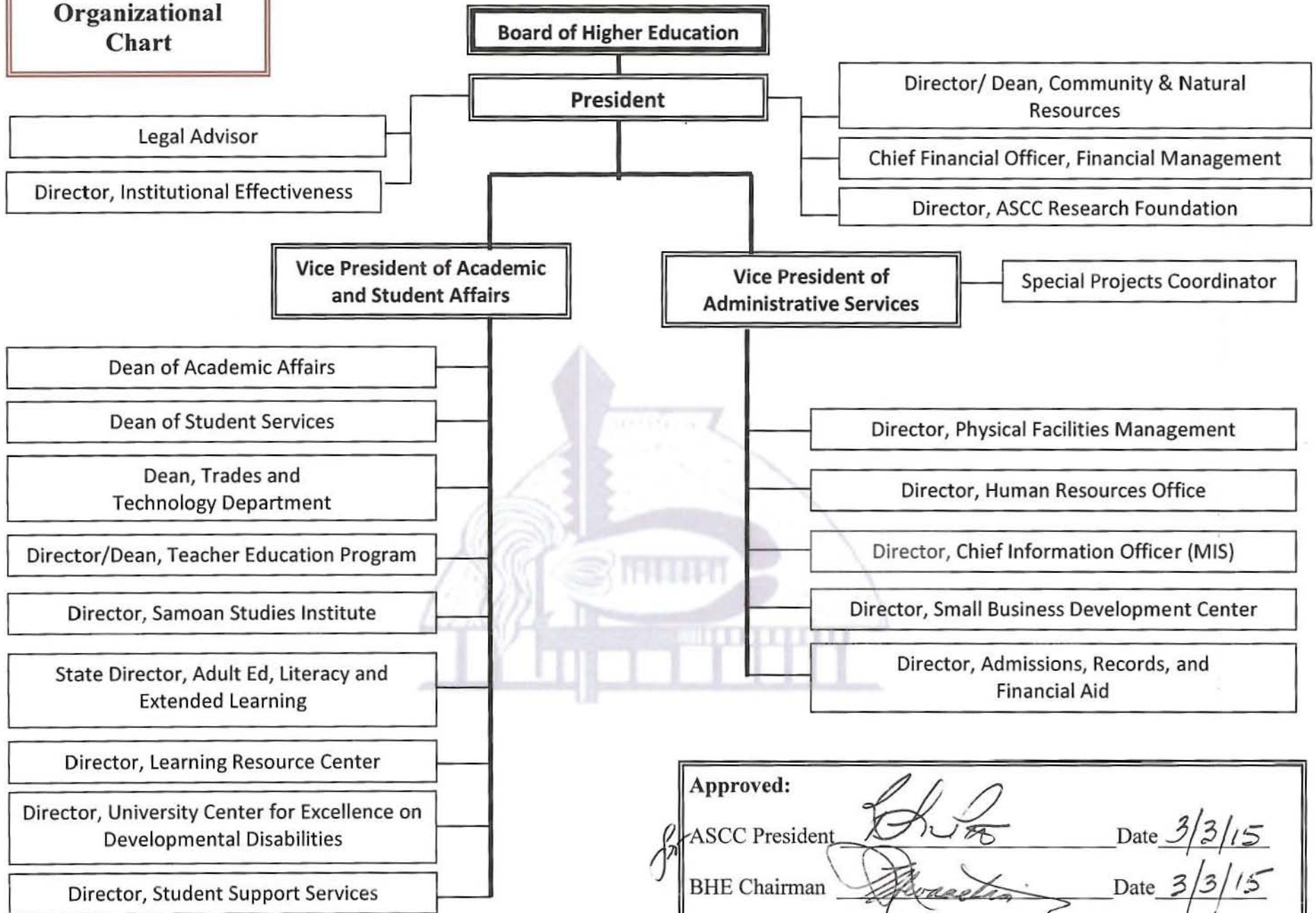
RE: **Organizational Chart**

ASCC Family,

With the approval of the Board of Higher Education, the Institutional Division has been placed under the direct supervision of the President. Please refer to the Organizational Chart attached and signed by the Chairman of the Board of Higher Education. Please use this most recent and updated organizational structure for all necessary organizational protocol.

Thank you.

**ASCC
Organizational
Chart**



Approved:

ASCC President *[Signature]* Date 3/3/15

BHE Chairman *[Signature]* Date 3/3/15